

## ABOUT THE PROGRAM:

Student Online is provided through the Minnesota Service Cooperative (MSC) Online Learning Project, an approved online provider with the Minnesota Department of Education.

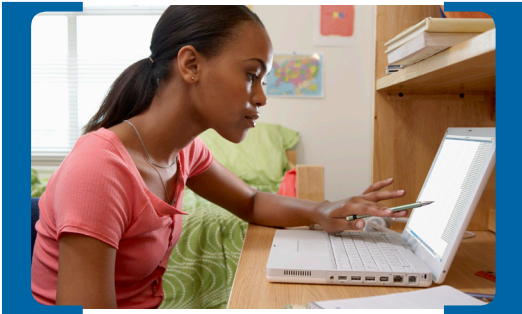
Online Learning for Students provides challenging educational opportunities for students who need credit recovery, advanced, additional or specialized courses, and/or a flexible learning environment. The courses offered through MSC Online provide a rich, multimedia environment for student learning. The courses require student involvement via online discussions, chats, projects and inquiry-based assignments, and include frequent contact with the teacher.

Online Learning is a part-time, non-diploma program, where students will remain enrolled in their own districts while taking online courses. Courses have flexible, "rolling enrollment" dates to better meet the needs of your students.

Since the student stays enrolled in your district, when/if the student decides to re-enter the traditional classroom environment, the transition is easier.

## PERFECT FOR STUDENTS WHO NEED:

- ➡ **Credit Recovery**
- ➡ **Specialized Courses**
- ➡ **Flexible Learning Environment**



*Adding value... Maximizing resources*

[www.resourcetraining.com](http://www.resourcetraining.com)

Nonprofit Org  
U.S. Postage  
AID  
St. Cloud, MN  
Permit No. 1668

4150 Second Street South  
Suite 550  
P.O. Box 1576  
St. Cloud, MN 56302

**Resource**<sup>®</sup>  
Training & Solutions



**Resource**<sup>®</sup>  
Training & Solutions  
A Minnesota Service Cooperative

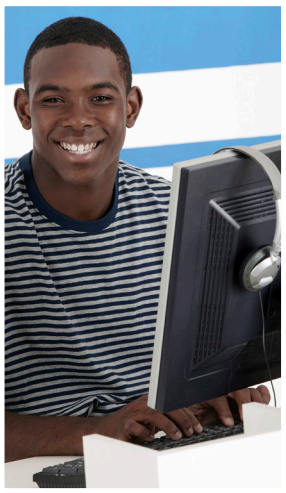
MSC **Online Learning**  
PROJECT FOR  
**STUDENTS**

**2010-2011 DISTRICT INFORMATION**

# WHY MSC Online FOR STUDENTS?

“... e-learning isn't about digital technologies any more than classroom teaching is about chalkboards.”

Robert Blomeyer, NCREL



## OUR MISSION

We build meaningful relationships that enrich our members and equip them with tools for success.

## FUNDING STAYS IN YOUR DISTRICT

Unlike other online programs, the student stays enrolled in your district. Consequently, the funding stays with the district as well.

## ACCOMMODATE HOMEBOUND STUDENTS

There are many reasons why students are not able to be in the classroom. MSC online offers education opportunities for those who are ill, out because of disciplinary reasons, stress and bullying issues in the classroom. Online learning is a flexible option for unusual circumstances.

## INCREASE COURSE OFFERINGS

MSC Online allows your district to offer an expanded course list without increasing staff expenditures. This includes offering timely credit recovery courses for students who need it in order to stay on track.

## FLEXIBLE LEARNING

MSC Online offers flexible rolling enrollment start times. This program serves students that need special accommodations (faced with illnesses, moving into your district, etc).

## EASIER RE-ENTRY TO THE CLASSROOM

Online learning is here to stay! It can cause some of your students to disappear from your district. By offering MSC Online, the student stays connected to your district while they explore other learning avenues. Then, they can more easily return back to the classroom at a later date with continuity in student reporting.

## ENROLLMENT COST FOR 2010/11 SCHOOL YEAR

\$2,500.00/year/member districts

THE STUDENT ONLINE PACKAGE INCLUDES: Training for three district staff in the Summer Facilitating Online Learning Course.

ADDITIONAL PRICING FOR STUDENT ENROLLMENT:

Fully-Online Courses; Taught by a teacher outside your district: \$425/student/course

This process will take place in both face to face and online learning environments using Moodle course management tools. Participants will have one face to face training (Online Teacher Training Facilitation session) followed by a three week online course where teachers will participate in and facilitate threaded discussions and online chats. The course will conclude with a final face to face session (Online Learning Certification session). The face to face dates are July 21 and August 11. (course code 8309)



## For more information or to enroll:

### Tammy Biery

(320) 255-3236 or (888) 447-7032  
tbiery@resourcetraining.com

### Martha Roth

(320) 255-3236 or (888) 447-7032  
mroth@resourcetraining.com